

# TRANSFORMATIONAL GROWTH LEADERSHIP

## Reimagining Global Healthcare: How Qure.ai is Scaling AI to a Billion Lives

**Prashant Warier**

Co-founder and  
CEO of Qure.ai

in conversation with

**Anantharaman Viswanathan**

Growth Expert & Research Director  
at Frost & Sullivan





## How a global health-tech innovator is bridging diagnostic gaps across 100+ countries.

As healthcare systems around the world struggle to keep up with rising patient demands, workforce shortages, and resource constraints, Qure.ai is redefining what's possible through AI. In this exclusive conversation, **Prashant Warier**, co-founder and CEO of **Qure.ai**, shares how the company evolved from an imaging AI startup to a global digital health enabler — bringing advanced diagnostics to underserved communities and reimagining care delivery at scale.

### A Vision for Equitable Care

**Ananth:** *Prashant, how did Qure.ai begin its journey?*

**Prashant Warier:** When we started Qure.ai in 2016, our mission was clear: use AI to make healthcare more accessible and equitable. We began by asking a simple but bold question – Can AI help clinicians make faster, more accurate decisions at scale?

Our early focus was on interpreting radiology

images to detect diseases like TB, cancer, and stroke. But as we deployed in the real world, it became obvious that radiology was just one part of a much larger care delivery challenge. We evolved quickly to support full care pathways, whether it's a rural clinic in Africa or a busy hospital in the U.S.

Today, we are powering care in over **100 countries**, showing how AI can enable both reach and impact. Our belief is simple: healthcare must be **proactive**, not reactive.



## Three Transformations Reshaping the Industry

**Ananth:** What key transformations are driving the future of healthcare?

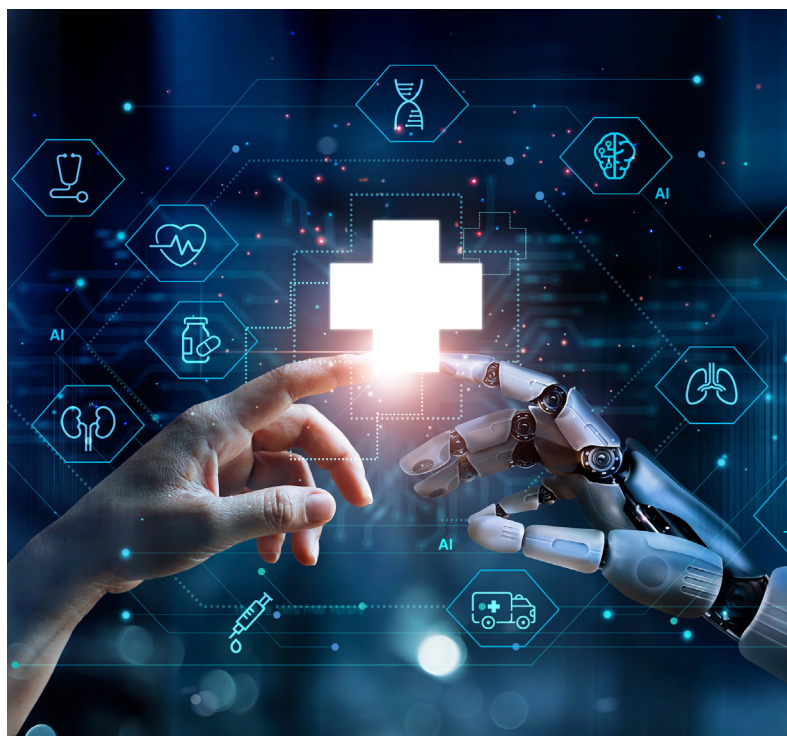
**Prashant Warier:** We are seeing healthcare move into a new era where technology isn't just an add-on but a central peg to how care is delivered.

First, **generative AI** is transforming clinical workflows, taking on routine tasks like summarizing histories or drafting notes. It frees doctors to focus on what truly matters: patient care.

Second, we are moving towards **connected care ecosystems**. With IoT [Internet of Things], wearables, and telehealth, care isn't confined to hospitals anymore. It can follow the patient wherever they are, which is crucial for chronic conditions and underserved populations.

Third, **digital therapeutics and precision health** are gaining momentum. AI and genomics together are enabling more tailored, predictive care. Qure.ai is at the intersection of all three — Integrating AI across diagnostics, pathways, and populations to build smarter, more inclusive systems.

Frost & Sullivan's **Transformational Growth Leadership Program** aims to honor visionary business leaders who possess the foresight and leadership acumen to drive positive change within their organizations. The leaders we celebrate hail from diverse sectors and company sizes, yet they all share an unwavering commitment to innovation and excellence.



“Healthcare doesn't just need smarter tools — it needs smarter systems. AI is not optional anymore; it's the key to delivering proactive, equitable care at scale.”

— Prashant Warier, Co-founder and CEO, Qure.ai

## Accelerating Pharma Innovation with AI

**Ananth:** How is Qure.ai collaborating with pharmaceutical companies?

**Prashant Warier:** One of the biggest bottlenecks in drug development is **patient identification**. Finding the right patients at the right stage of disease progression is crucial for clinical trials and steering positive patient outcomes, especially for conditions like lung cancer where early symptoms often go unnoticed.

We work with **over half of the top 20 global pharma companies**, embedding AI into screening programs to find at-risk patients earlier and link them to care.

For example, with **AstraZeneca**, we have enabled over **5 million chest X-ray scans** worldwide, identifying lung nodules early and improving access to timely treatment, especially in Low- and Middle-Income Countries (LMICs).

With **J&J MedTech**, we are setting up **Incidental Pulmonary Nodule Clinics** across India to proactively detect and manage early-stage lung abnormalities. It's a shift from reactive to **population-health-driven care**.



## The Billion Lives Ambition

**Ananth:** What's your five-year vision for Qure.ai?

**Prashant Warier:** We are incredibly honored to be named one of **TIME's 100 Most Influential Companies in 2025**. But for us, the mission has just begun.

Our vision is to become the **most deployed and trusted digital health enabler** globally. We want to **touch a billion lives** in the next five years — not just through diagnostics, but across **end-to-end care journeys**.

That means supporting national health ecosystems, powering chronic disease management, and embedding AI right from PHCs [primary health centres] in rural areas to tertiary hospitals in advanced economies.

## Scaling Impact at the Grassroots

**Ananth:** Where do you see the biggest opportunities?

**Prashant Warier:** The biggest opportunity lies in embedding AI deeper into health systems. In LMICs, that means being present at every primary health centre – bringing diagnostics to the first point of care.

We recently launched Aira, our AI-powered clinical co-pilot. It supports frontline workers, even those with limited clinical training, helping them make confident decisions in real time.

In the West, our **Lung Cancer Continuum** ensures no patient or nodule is left behind, by tracking, measuring, and alerting clinicians throughout the care journey.

Ultimately, the opportunity is **country-scale adoption**. That's when AI begins to close systemic care gaps.

## Overcoming Global Health Complexity

**Ananth:** What are the biggest challenges you face?

**Prashant Warier:** Scaling globally means working within vastly **diverse health systems** – each with its own regulations, workflows, and resource limitations.

The other challenge is funding. Public health programs are under strain worldwide. So, we must continually prove that AI isn't just innovative – it's **cost-effective**, scalable, and essential to building stronger health systems.

## Innovation Grounded in Reality

**Ananth:** How do you drive innovation? And how do you handle failures?

**Prashant Warier:** Innovation at Qure.ai starts on the ground – with clinicians, partners, and real-world challenges. It's not just Research & Development in a lab.

Every product we build is meant to **fit into existing workflows** and amplify human expertise. And yes, some ideas don't land. But we don't see that as failure. It's part of our **build-deploy-learn-improve** cycle.

We constantly iterate, refining what works and learning from what doesn't.

## Built for Scale, Built for Equity

**Ananth:** What differentiates Qure.ai from others in the space?

**Prashant Warier:** Unlike others focused solely on high-income, hospital-centric markets, **we operate across the entire spectrum** – from remote PHCs to advanced urban hospitals.

Our tech is **modality-agnostic**, spanning lung health, neuro, infectious diseases, and chronic care. We have gone beyond point solutions to become a true **digital health enabler**.

And our partnerships reflect that working with over half of the world's leading pharma companies and numerous national health programs. **Scalability and trust** define who we are.

## Final Thoughts: From Optional to Inevitable

**Frost & Sullivan:** What's one message you would like to leave the world with?

**Prashant Warier:** AI in healthcare is no longer optional, it's **inevitable**.

The future belongs to **proactive, AI-enabled health systems** that can scale care without compromising quality. AI isn't here to replace humans, it's here to **amplify human judgment**, deliver faster insights, and ultimately make healthcare more **equitable**.

That's the transformation we are leading at Qure.ai.







### **Prashant Warrier | Co-founder and CEO of Qure.ai**

Prashant Warrier is the co-founder and CEO of Qure.ai, the world's most widely deployed medical imaging AI company, with solutions used in over 4,200 hospitals across 100+ countries. With over two decades of experience, he has built and commercialized data science applications across industries. Prashant holds 30+ patents, has published in top journals like The Lancet and Nature, and was named among the top 30 AI Innovators by Forbes India in 2025. He has also received the Forbes India Leadership Award in 2021 for innovation in COVID diagnostics. A strong advocate for AI in healthcare, he frequently speaks at global forums. He holds a PhD and MS in Operations Research from Georgia Tech and a bachelor's degree from IIT Delhi.



### **Anantharaman Viswanathan | Growth Expert Research Director at Frost & Sullivan**

Anantharaman brings over 22 years of experience in business research and strategy consulting, with a focus on the healthcare and life sciences industries. His expertise lies in identifying transformative technologies, evaluating innovative business models and uncovering growth opportunities across global healthcare and life sciences markets. He has authored numerous market research reports and insight articles on the global pharmaceutical and biotech sectors and has presented at leading industry conferences, including BioAsia and Biosimilars India. Anantharaman holds an MBA from the National Institute of Technology, Tiruchirappalli, and has completed the Advanced Program in Strategic Management at Indian Institute of Management, Calcutta.

## **Join the Movement: Scaling AI for Equitable Healthcare**

At Frost & Sullivan, we invite healthcare leaders and changemakers to be part of the Transformational Growth Leadership (TGL) movement — a platform where bold ideas and impactful technologies shape the future of global health.

#### **Connect with us to:**

- ▶ **Subscribe** to our Growth Opportunity Newsletter
- ▶ **Join the Growth Council** an exclusive community for innovators
- ▶ **Share your transformation journey** with a global audience
- ▶ **Engage with our growth experts** to explore new growth opportunities

# Annexure: Scaling AI for Equitable, System-wide Health Impact

For a deeper understanding of how artificial intelligence, diagnostic innovation, and care delivery transformation are reshaping global healthcare, explore these Frost & Sullivan thought leadership resources aligned with Qure.ai's mission:

- ▶ [Advanced Visualization Solutions for Medical Imaging, Global, 2024–2029](#)
- ▶ [Innovative AI-enabled Clinical Trial Companies: Strategic Profiling and Growth Opportunities](#)
- ▶ [AI-enabled Medical Imaging Market, Global, 2024–2028](#)
- ▶ [Global Decentralized Clinical Trials Growth Opportunities](#)
- ▶ [Global Pharmaceutical Industry Outlook, 2025](#)

Each of these analyses delivers actionable insight for digital health leaders, AI developers, public health officials, and pharma stakeholders committed to building scalable, equitable, and proactive health systems.

## YOUR TRANSFORMATIONAL GROWTH JOURNEY STARTS HERE

Frost & Sullivan's Growth Pipeline Engine, transformational strategies and best-practice models drive the generation, evaluation, and implementation of powerful growth opportunities.

Is your company prepared to survive and thrive through the coming transformation?

[Join the journey.](#) →